

Windsor Authority

TECHNICAL DATA SHEET

The Windsor Authority Lantern was designed to bring the popular style of a Victorian Lantern to a suitable standard that would be able to cope with and endure the modern day environment and the demands placed upon a street lighting luminaire today. The design brief demanded a lantern that was robust, simple to maintain, efficient, flexible and styled in such a way as to replicate the design of a bygone era.

The demands and needs of both public and private sectors for a vandal resistant, decorative traditional luminaire that satisfied the scrutiny of the conservationists was a tall order but one that was and is more that satisfied by the Windsor Authority lantern.

Construction

IP66 tested & Certified by BSI.

Single piece Gravity Die-cast Aluminium Frame.

Single piece Die-cast Aluminium Hood.

UV Stabilised vacuum formed single piece Polycarbonate Glazing Box.

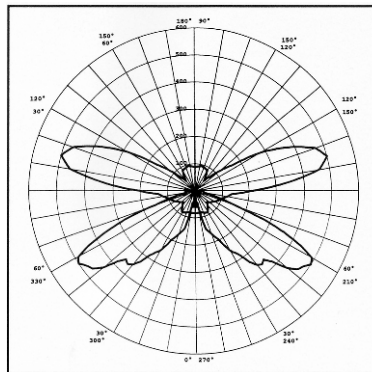
Cast Aluminium or Galvanized Steel Fabricated frog assembly.

Single total width hinge assembly.

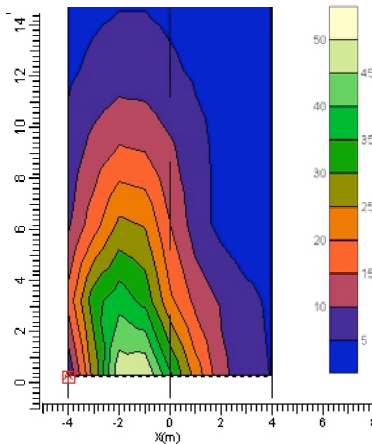
Cast Aluminium pinnacle & chimney assembly.

Gas strut support for Open Hood position.

Polar Diagram
70w Son-T Plus / SGS 203



Isolux Diagram



Photometric Data

	70w	100w	150w
LOR	0.66	0.81	0.85
ULOR	0.014	0.017	0.018
DLOR	0.65	0.79	0.83

Optic Options

Open Lamp

Glass Refractor (Sugar Bowl)

Philips SGS 203 Pot Optic

Mounting Options

Traditional fabricated Steel Frog

Cast Aluminium Frog

In Conjunction with:-

Post Top Fix

Bottom Fix Wall/Post Top Bracket

Top Fix Wall/Post Top Bracket

Mid Fix Cradle Wall/Post Top Bracket

76mm Post Top as standard

60mm & 90mm available

Lantern Details

Windage Area 0.23m²

Height from Base 849mm

Maximum Width 455mm

Average Body Weight 14kg

Gear/Lamp Types Available

High Pressure Sodium (SON)

Low Pressure Sodium (SOX)

Metal Halide

Mercury

Photocell switching

Note:-

Supplied pre-wired with sufficient cable for termination.

Lantern	H	W	Code
Windsor Authority	849	455	MW150